

Map Box Design



Acton Land Stewardship Committee
Acton, Massachusetts

Robert F. Guba
Construction Coordinator
3/7/09

Materials and Assembly

Materials List

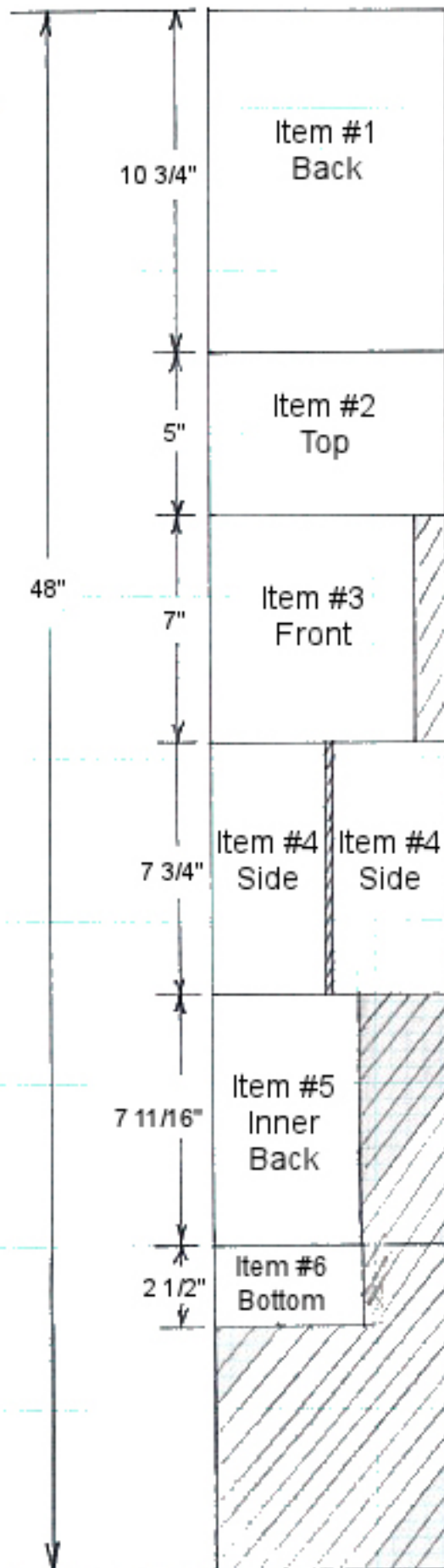
<u>Quantity</u>	<u>Description</u>	<u>Cost</u>
1	Pine board, common grade 1" x 8" x 4 feet	\$3.24
20	#8 x 1½" zinc plated steel, flat head Phillips, wood screws	0.66
1	Zinc plated, non-removable 2½" pin hinge	<u>1.35</u>
		\$5.25

Assembly Tools

Phillips head screwdriver.

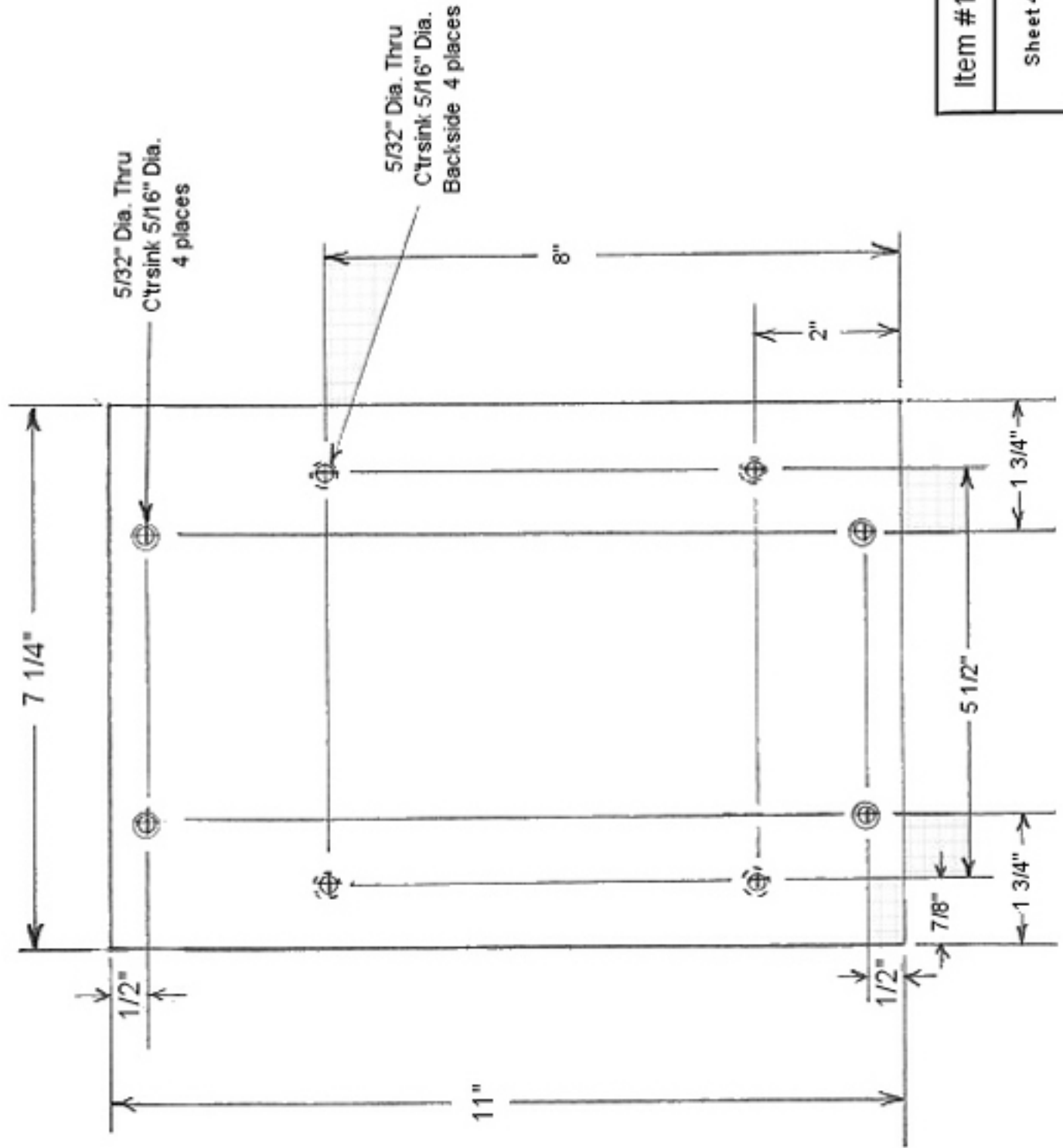
Assembly Notes

1. Assemble the **Front** to one **Side**.
2. Assemble the **Bottom**.
3. Assemble the other **Side** and the **Inner Back**.
4. Assemble 1,2, & 3 to the **Back**.
5. Align the **Top** on the assembly with a 1/32" shim between it and the **Back**.
6. Center the hinge. Mark and drill 7/64" pilot holes ½" deep.
7. Remove the shim and attach the hinge with screws supplied with the hinge.



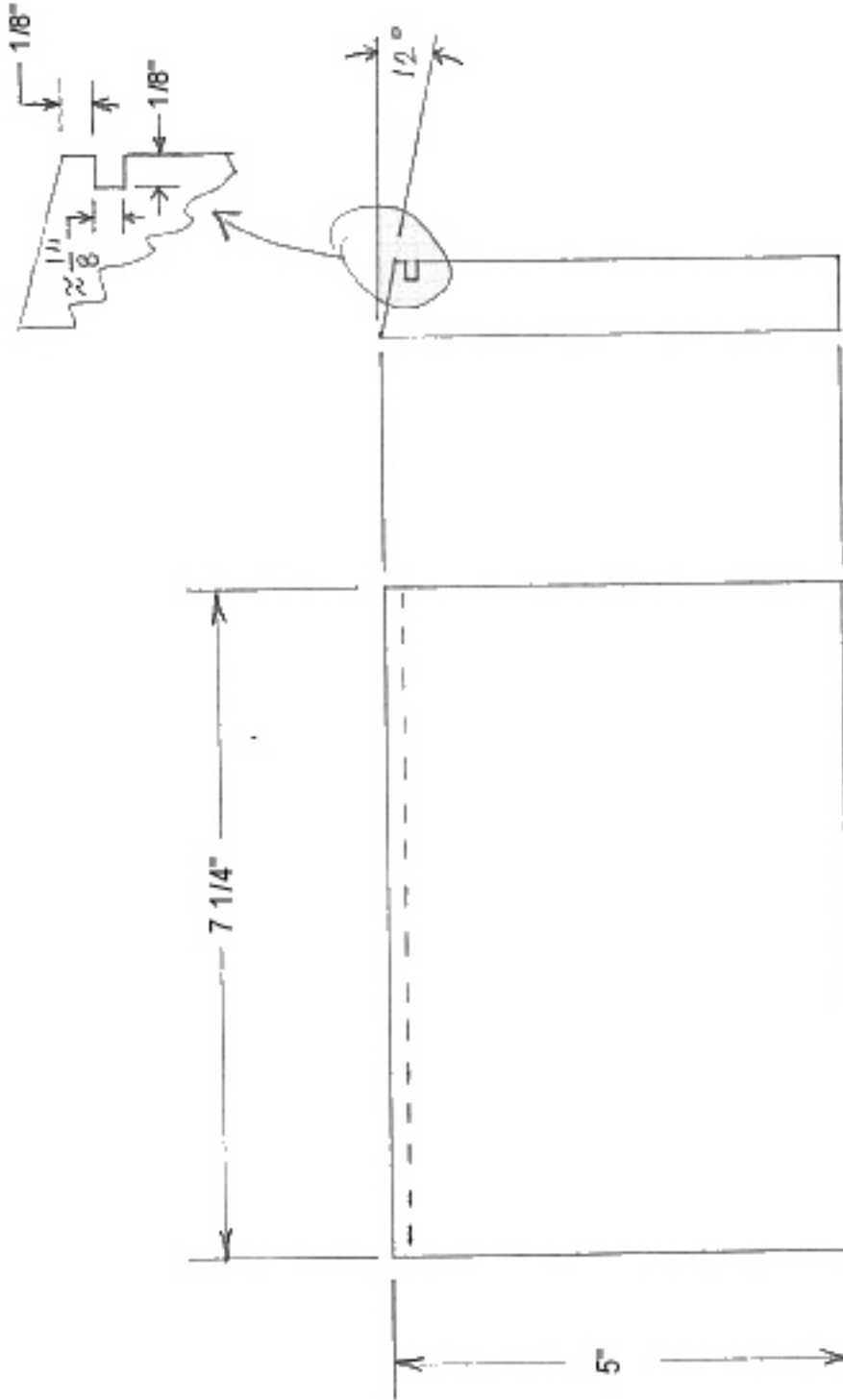
1" x 8" x 4' Select Pine

Saw Cuts
Sheet 3 of 10
RFG 1/14/98

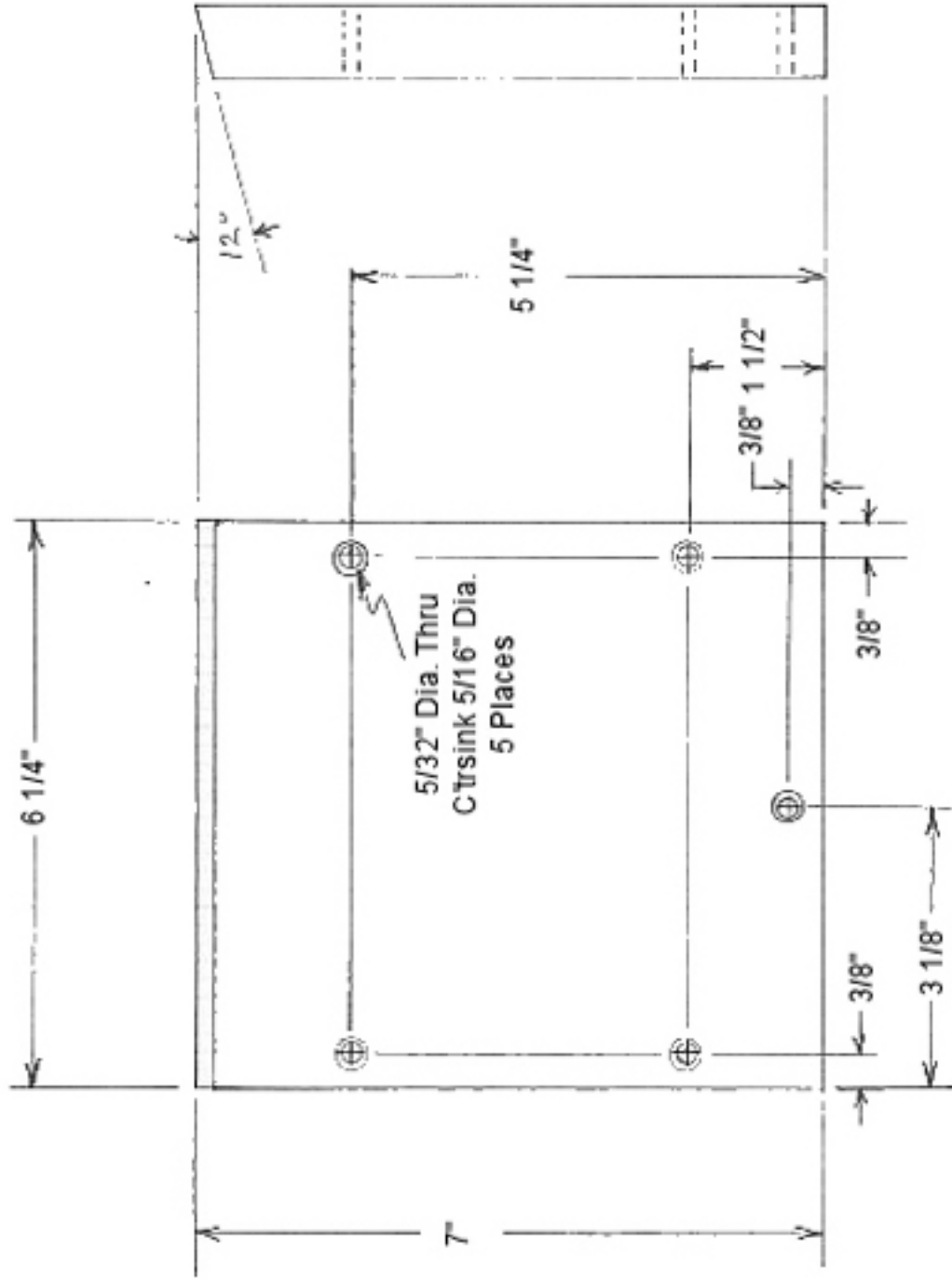


Item #1 - Back
Sheet 4 of 10
RFG
1/14/98

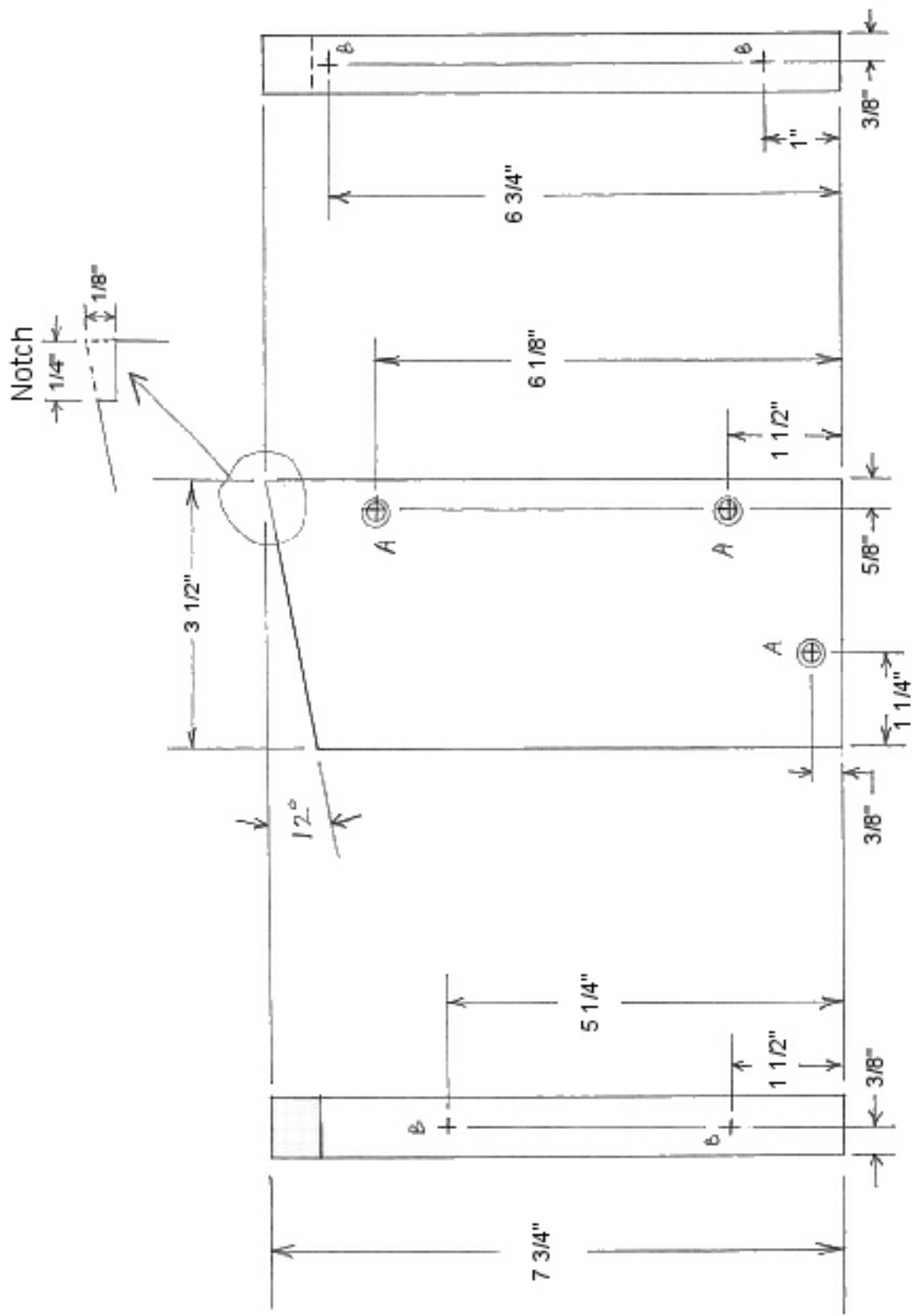
Drip Edge Notch Detail
Saw Cut 1/8" Deep



Item #2 - Top
Sheet 5 of 10
RFG
1/14/08



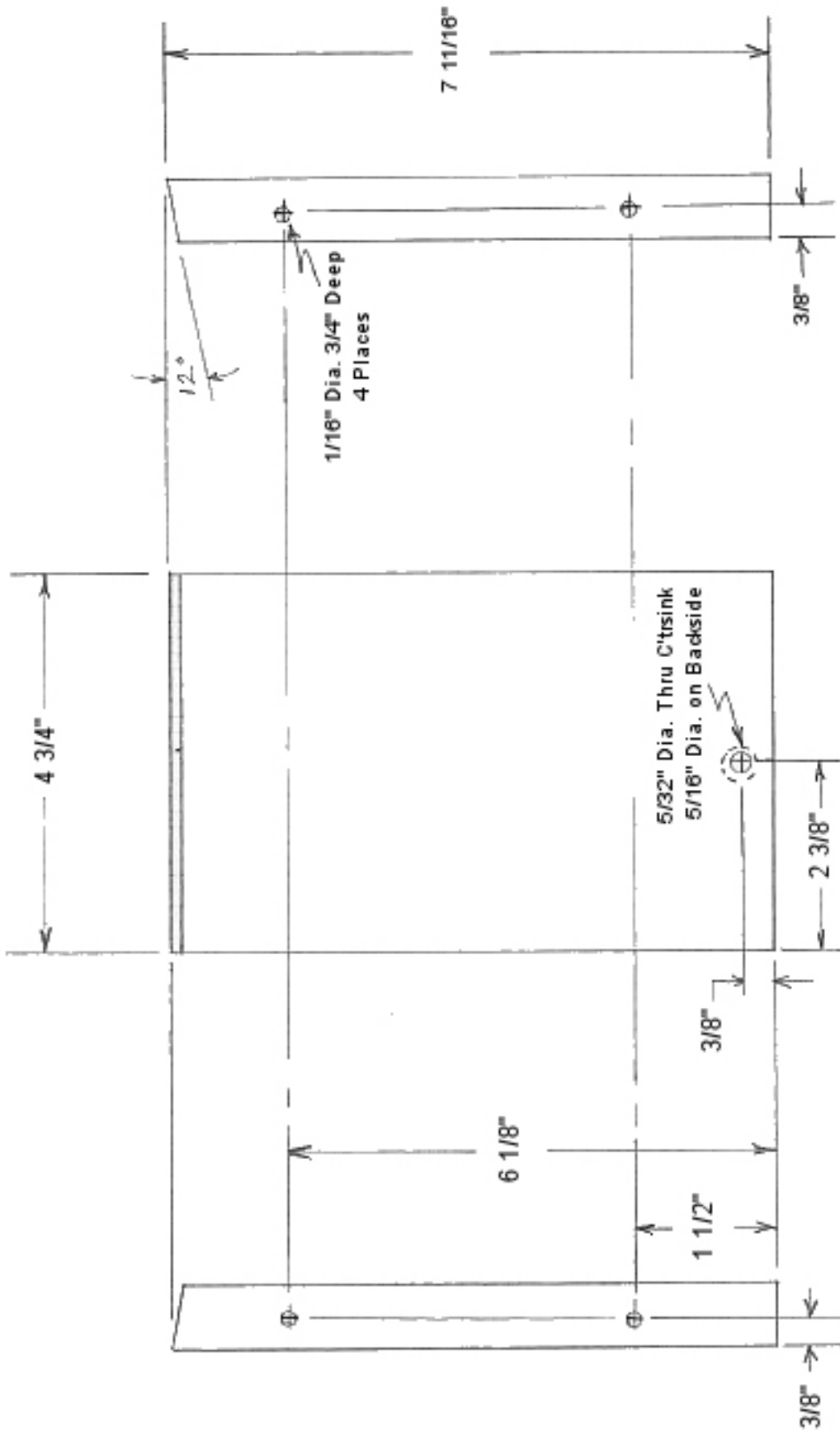
Item #3 - Front
 Sheet 6 Of 10
 RFG
 1/14/98



A - $\frac{5}{32}$ " Dia. Thru, Ctrsink $\frac{5}{16}$ " Dia. 3 Places

B - $\frac{1}{16}$ " Dia. $\frac{3}{4}$ " Deep 4 Places

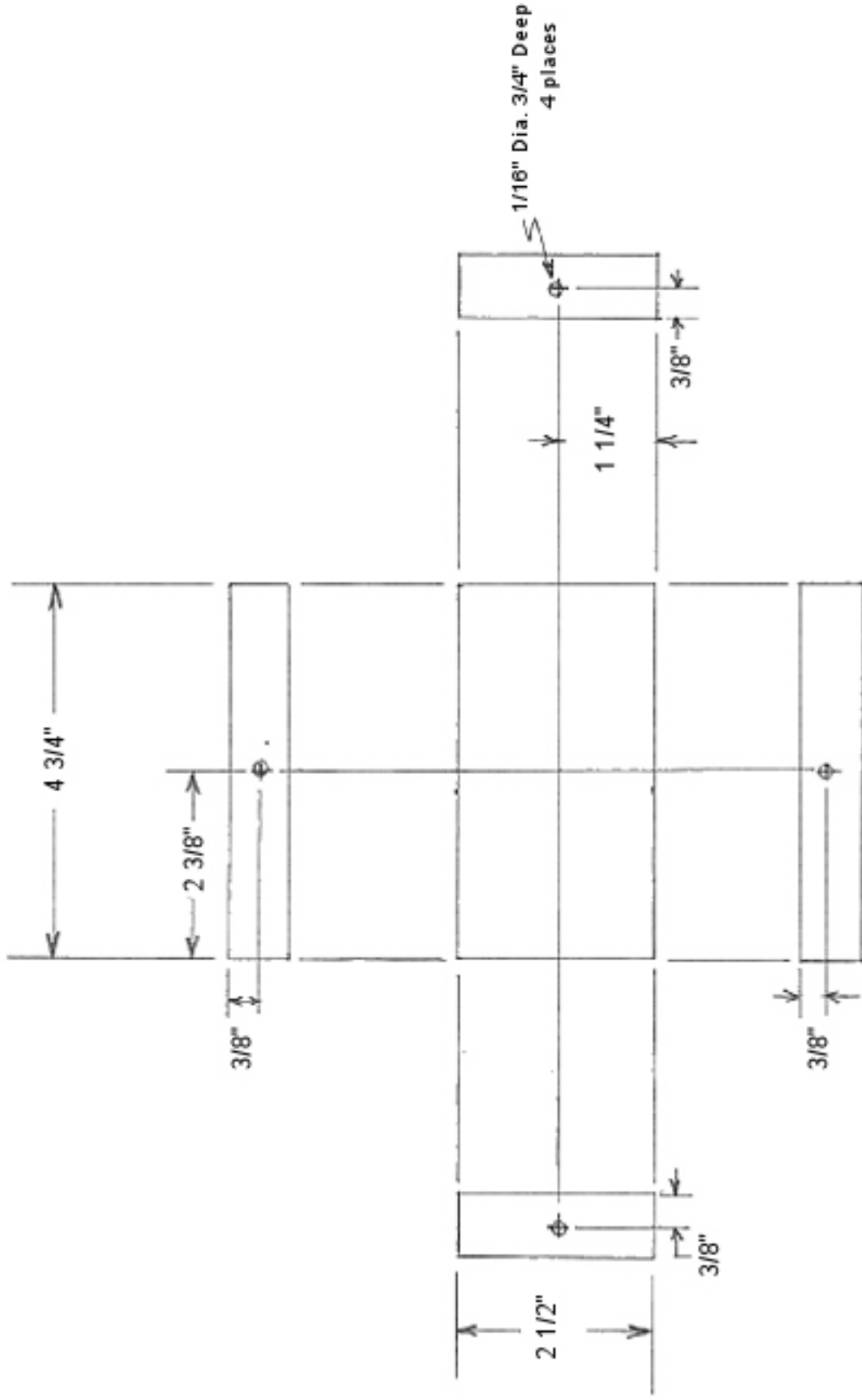
Item #4 - Side (2)
Sheet 7 of 10
RFG
1/14/98



Item #5 - Inner Back

Sheet 8 of 10

RFG
1/14/98

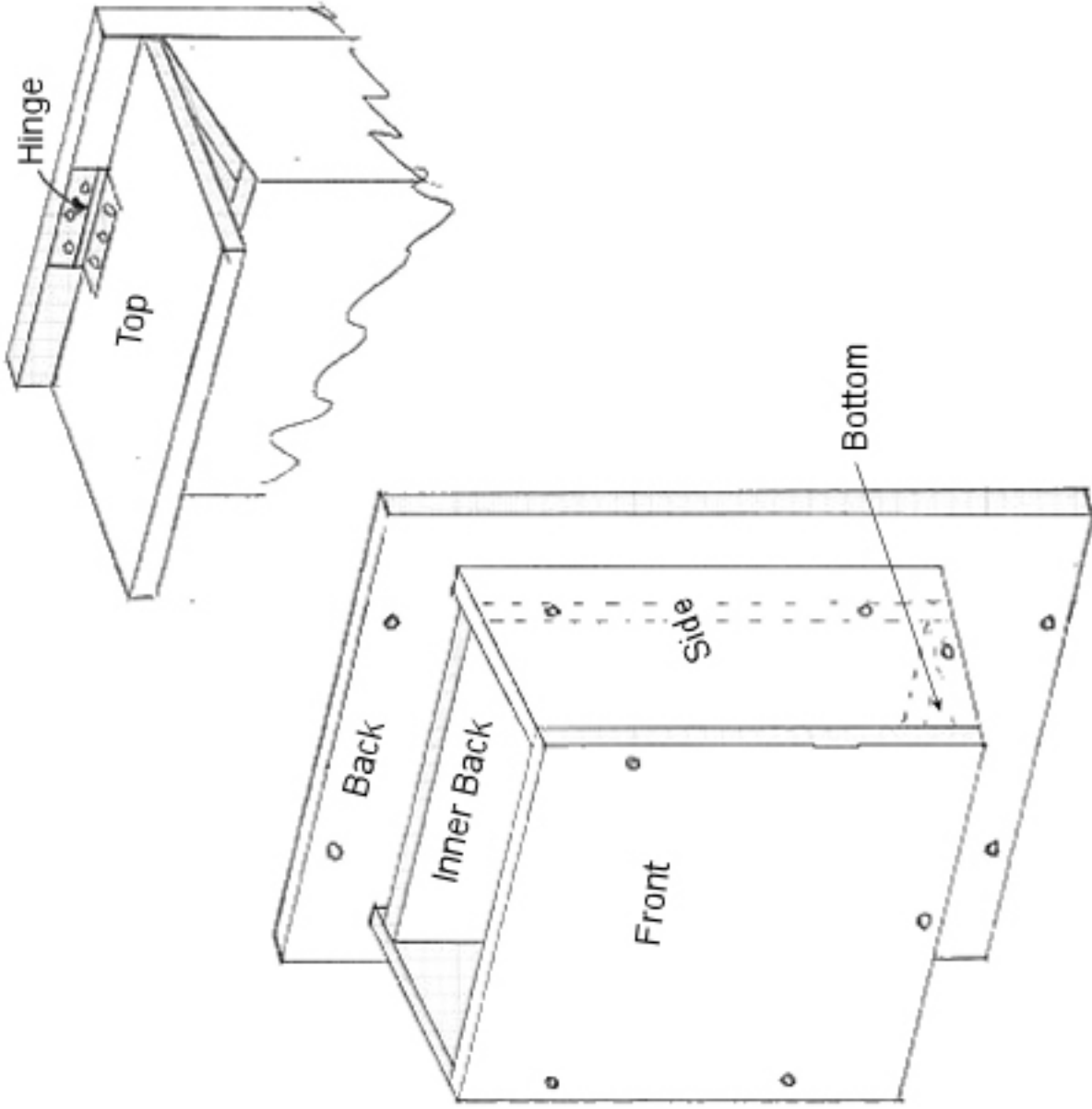


Item #6 - Bottom

Sheet 9 of 10

RFG

1/14/98



Assembled Box
Sheet 10 of 10
RFG 1/14/98